

ARINTO 2022



RIBEIRO & MOSER

VINHO REGIONAL LISBOA

SUSTAINABLE PACKAGING SHOULD BE A PRIORITY FOR THE WINE INDUSTRY



Ribeiro-Moser believes it is time for the wine industry to uncork a new approach that takes into account the **environmental impact** of heavier bottles. According to reputable studies, lightweight bottles can save energy and reduce emissions, thereby improving the health of our planet.

The difference between a 360 g and a 570 g bottle may appear insignificant, but it has significant environmental benefits. We save energy, raw materials, reduce emissions, and have a positive impact on the environment with each lightweight bottle.

At Ribeiro-Moser, we believe it's well past time for the wine industry to raise a glass to sustainability and embrace lighter, more environmentally friendly packaging, which is why we chose a 360g bottle for our wine.

HERDADE DO ROCIM

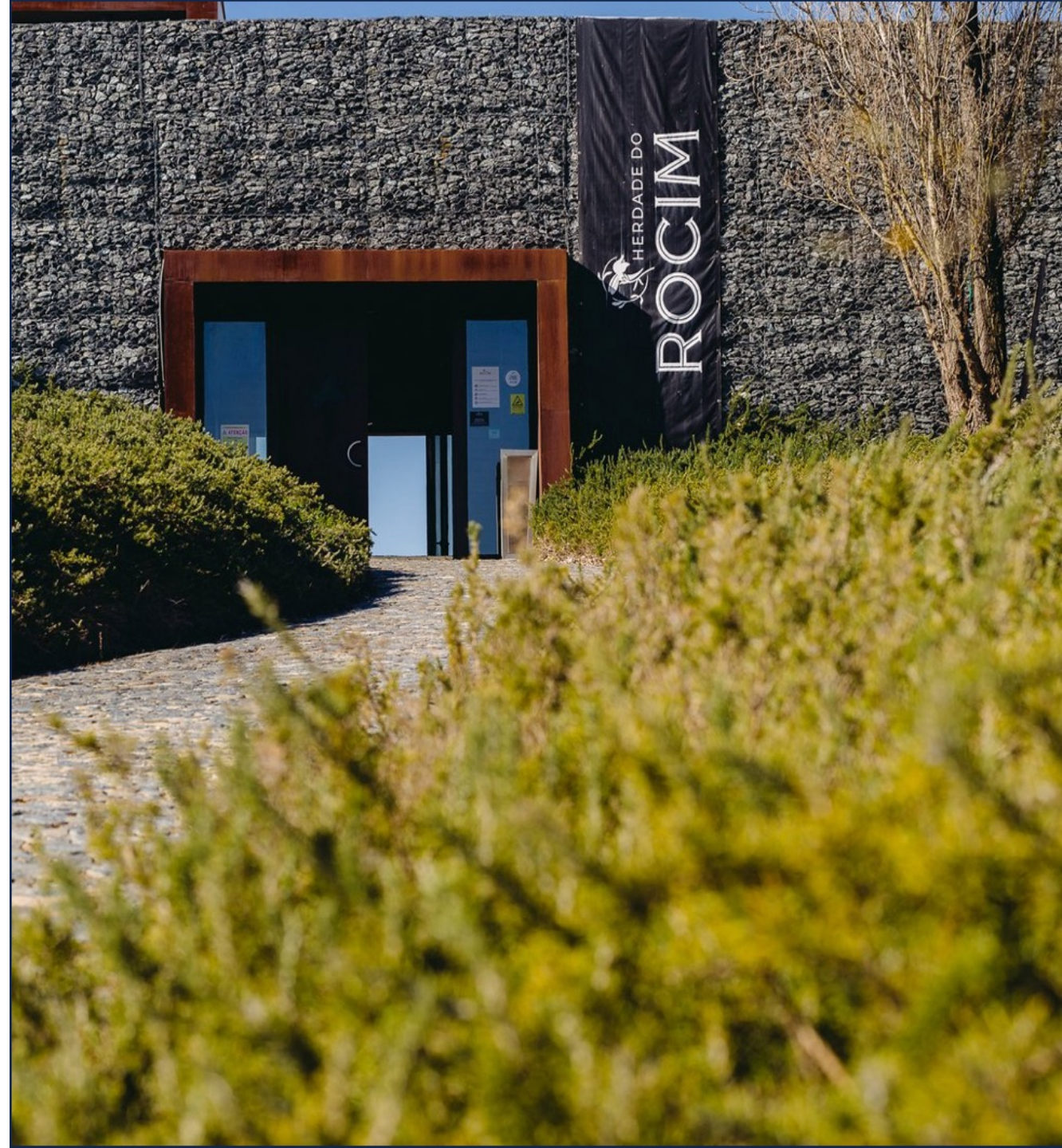
OUR PARTNER AND HOST

Herdade de Rocim is a dream come true for the Movicortes company, which has successfully diversified into winemaking.

The estate, located in the Baixo Alentejo region between Vidigueira and Cuba, has over 70 hectares of vineyards that produce high-quality wines.

In the year 2000, the project began with the restructuring and planting of new vines, as well as the introduction of new grape varieties. These actions combine old and new knowledge with passion and emotion. The cellar was built, and the production of wine under the company's own label began.

Herdade de Rocim is a must-see destination for wine enthusiasts, with a reputation for excellence. The dream lives on, with an emphasis on the present and the future, and the conviction that the groundwork for expansion has been laid.





PEDRO RIBEIRO

Pedro Ribeiro is Herdade do Rocim's General Director and Winemaker, having studied Enology at UTAD in Portugal and worked at Tintara Winery in Australia, as well as other projects in Portugal.

Rocim is a project initiated by Movicortes, S.A, which began its winemaking investment with the Herdade do Rocim in 2000, with the goal of restructuring and refining the quality of the estate.

The Herdade do Rocim's winemaking philosophy is based on minimal intervention, with the goal of reflecting the terroir in each bottle produced.



LENZ MARIA MOSER

Lenz Maria Moser was born into a prominent Austrian wine family and was destined to carry on their legacy of breaking new ground in fine wine. His grandfather invented a new trellising system, and his father pioneered biodynamic vine cultivation in Austria in 1978.

Lenz rose to become the CEO of Robert Mondavi Europe after spending a significant amount of time learning directly from Robert Mondavi. Following the sale of the company, Lenz went on to follow his grandfather's advice and launch his project "New Chapter" to promote the widely unknown grape variety "Grüner Veltliner" around the world. All of this made him more aware of the dormant potential that exists in many of the world's most beautiful terrains and terroirs, all of which are destined to produce great wine. This is how a series of ventures were launched, all with the goal of promoting these world-class regions and grape varieties to the international wine community.

ARINTO

The Arinto grape has been cultivated for centuries in the Lisbon wine region and is known for producing wines with high acidity and a fresh, crisp flavor. The grape is frequently blended with other local grape varieties such as Sercial and Rabo de Ovelha to create a distinctively Portuguese blend.

Arinto must make up 75% of the blend in the small DOC of Bucelas, north of Lisbon, and is frequently made into a single varietal wine. Arinto wines have been produced in the region for a long time, with some vineyards dating back to the 13th century. The grape has long been prized for its high acidity, which makes it ideal for blending and aging.

Arinto wines from the Lisbon wine region have a distinct aromas, with lemon and apple flavors, as well as a chalky minerality that is unique to the region. These wines are adaptable and pair well with a wide range of dishes, including rich seafood ones like Portuguese bacalhau and grilled vegetables.

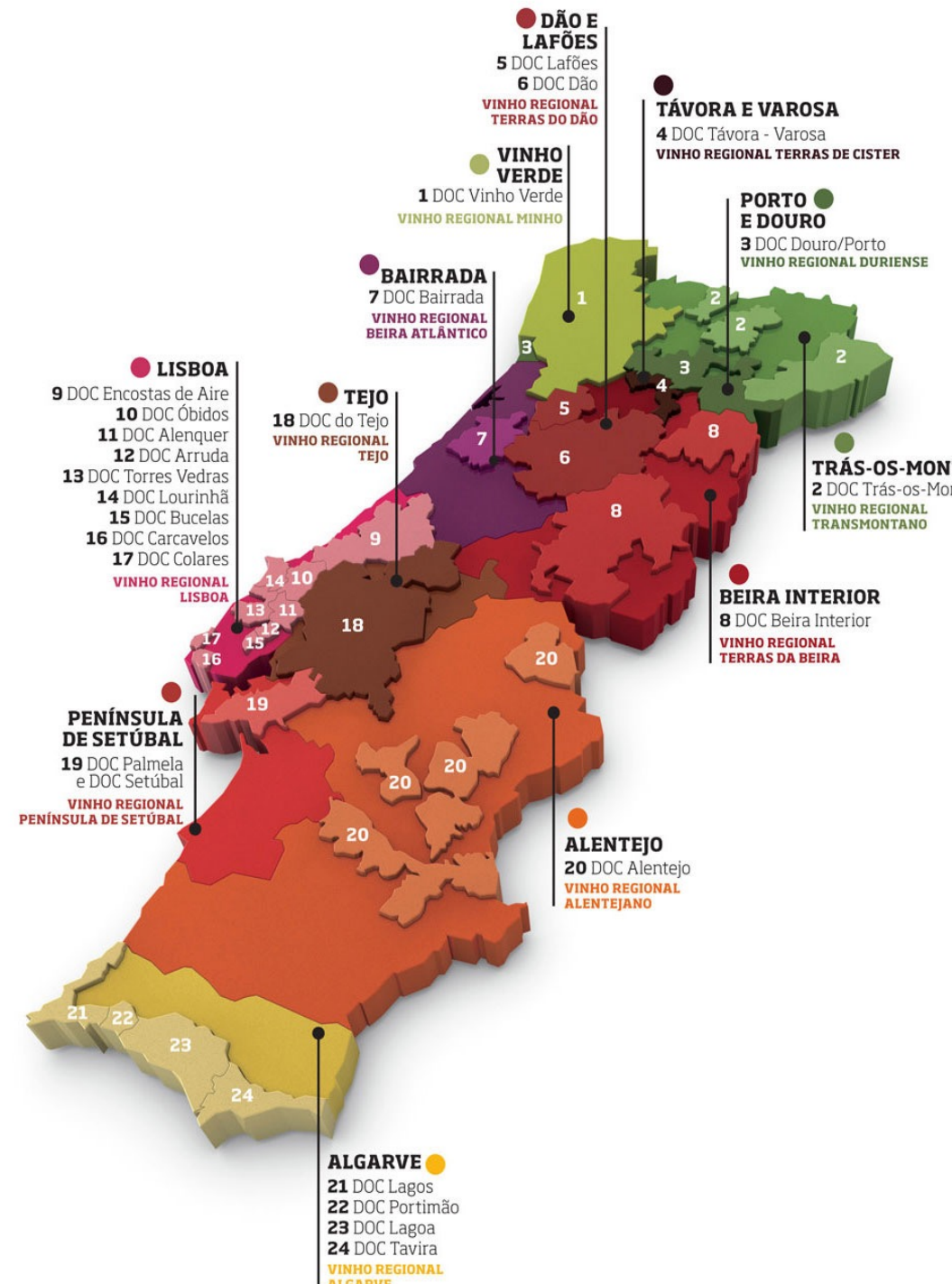


VINHO REGIONAL LISBOA

Since its name change in 2009, the Vinho Regional Lisboa wine region, which stretches along the Atlantic coast to Bairrada, has captivated wine lovers. The terroir of the region is diverse and offers exciting facets for both white wines, particularly along the Atlantic coast, and red wines, which are dominant in vineyards further inland.

The region has nine DOC sub-zones, and the soil structure ranges from clay-limestone to sandy-loam. The region grows both local and international grape varieties like Arinto, Chardonnay, and Cabernet Sauvignon, and the wines range from fresh and aromatic white wines to intense and tannic red wines. Bucelas and Colares are DOC zones known for their crisp white wines and aromatic red wines.

VINHO REGIONAL LISBOA



THE ART OF BLENDING

Blending is an important aspect of winemaking that involves combining different grape varieties or wines to create a unique and complex final product.

Arinto, a native Portuguese grape with high acidity and a range of citrus and mineral flavors, is one grape variety that is commonly used in blending. Arinto is frequently blended with other grapes, such as Sercial and Rabo de Ovelha, to produce a wine with the ideal balance of acidity, fruitiness, and complexity.

The winemaker must carefully select the grape varieties, determine the best blend, and apply their knowledge to create a harmonious and balanced wine. Blending is a science as well as a creative process that allows winemakers to express their individual style and vision in each unique blend they create.



VARIETY

Arinto



ANALYTIC PARAMETERS

Alcohol Content > 12,5%
Total Acidity > 5,7 g/l
Volatile Acidity > 0,32 g/l
Residual Sugars > 1,1 g/l pH > 3,12

VINIFICATION

Fermentation and aging in concrete tank (90%) and 500L barrels (10%).

TASTING NOTES

It has big acidity followed by a honeyed feel. The acidity cuts through it, to be sure.
It mingles nice mid-palate solidity with a lot of zing and zest while maintaining its elegance and balance.

Contém Sulfitos | Contains Sulfitos | Contient Sulfitos | Enthält Sulfite